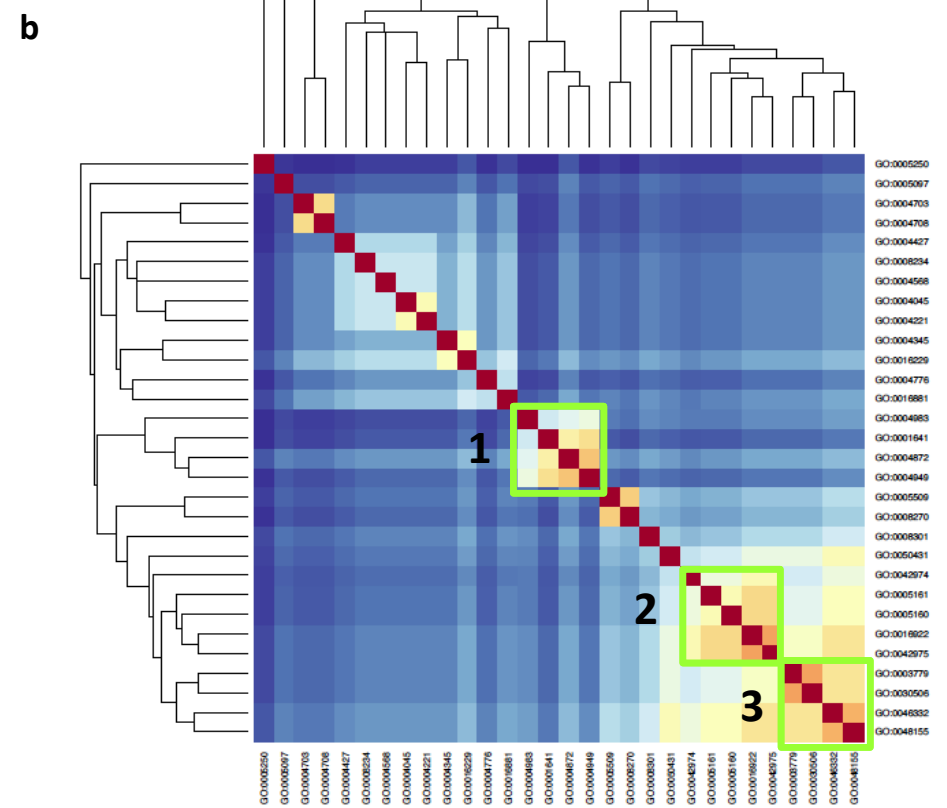


- 1**
- Apicolateral plasma membrane
 - Membrane attack complex
 - Integral to plasma membrane

- 2**
- Cytoplasmic dynein complex
 - Cytoskeleton
 - Postsynaptic density



- 1**
- Group II metabotropic glutamate receptor activity
 - Receptor activity
 - Cannabinoid receptor activity

- 2**
- Platelet-derived growth factor receptor binding
 - Transforming growth factor beta receptor binding
 - Ligand-dependent nuclear receptor binding
 - Peroxisome proliferator activity receptor binding

- 3**
- Actin binding
 - Ankyrin binding
 - SMAD binding
 - S100 alpha binding